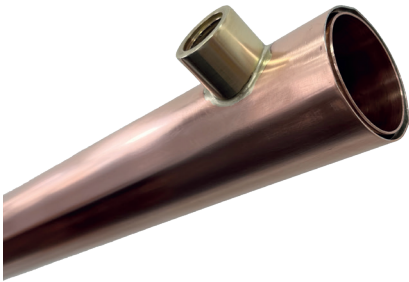


Showersave

A wonderfully simple route
to cost effective energy saving

Benefits

- ✓ Critical for Part L 2021 compliance and route to Future Homes Standard.
- ✓ Low CAPEX and competitive £ per point in SAP.
- ✓ Lower cost alternative than other technologies, including MVHR, Solar PV and Triple Glazing.
- ✓ Easy to incorporate into current building designs.
- ✓ Simple to install using standard plumbing skills of work force.
- ✓ Can be kept in-line throughout whole house pressure test to > 20 bar, therefore no need to isolate.
- ✓ Most systems require little, or no maintenance.
- ✓ Fantastic record of post installation reliability.
- ✓ Showersave is a “fit and forget” technology.
- ✓ Showersave is >70% efficient, depending on flow rate.
- ✓ Comprehensive customer support.
- ✓ The Showersave pipe is fully reusable or recyclable.
- ✓ Embedded Carbon independently measured at 51KgCo²e using CIBSE TM65 methodology. Carbon recovery less than 6 months.
- ✓ Proven to cut running costs of heat pumps and increase the overall efficiency of space heating and hot water production.
- ✓ Only WWHRS designed, manufactured and distributed throughout Europe by a single company.



QB1-21XE

- Max efficiency of 70.6% @ 8l/min.
- Most widely used and reliable system.
- >25,000 units installed in UK.
- Up to 2 x showers can connect to single system.
- System appropriate for use in both residential (houses and apartments) & commercial projects when max demand reduction required.
- Can be used in commercial projects seeking challenging BREEAM performance.
- Zero maintenance.

NCM (SAP) Identifier: 080201

Showersave Blue QB1-21

- Max efficiency of 69.85% @ 8l/min.
- Ideal solution for new build apartment blocks.
- Ideal retrofit solution for both housing and high-rise dwellings.
- Provides Housing Associations with an efficient means of reducing fuel poverty.
- Very little maintenance required in comparison to Linear systems.

NCM (SAP) Identifier: 080183



MultiVert

- Variable levels of efficiency, dependent on peak use of showers. Generally, >40%.
- Cost effective plant room system, preheating water feed to calorifier.
- Recognised status in SBEM.
- Reduces need for designing in PV and CHP systems.
- Connects to grey water waste.
- Extremely low maintenance.
- Systems bespoke design suitable for most projects where primary energy demand, as a result of domestic hot water, is high.
- For use in apartments with district heating when space in risers is at a premium.
- Unrivalled returns on investment for building occupiers.



House

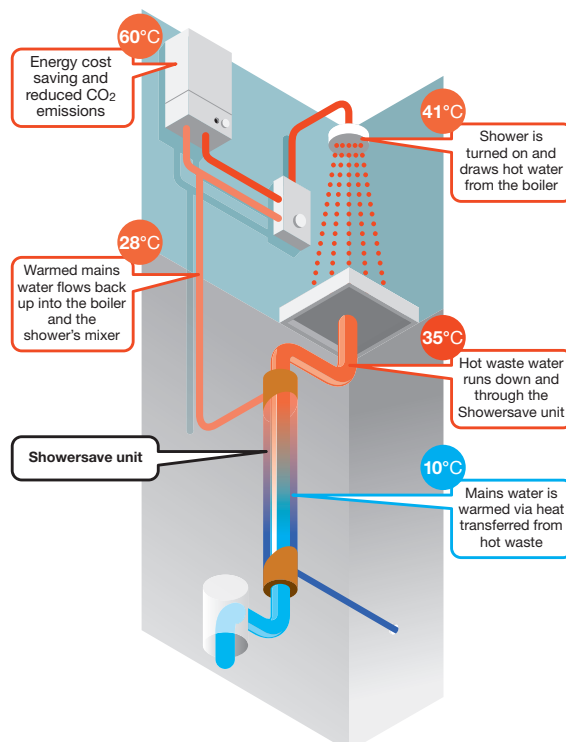
Apartment
Private Sale

Apartment
PRS/Social

Bungalow

Building with multiple showers
(eg. Hotel, Hall of Residence, Leisure Centre)

QB1-21XE	Ideal solution for volume developer	May be installed in common service riser	Ideal solution if installed in service riser or domain of flat below	x	High efficiency solution for SBEM / BREEAM assessment
Showersave Blue QB1-21	x	Designed to overcome the maintenance problems of horizontal WWHR, while delivering the higher efficiency of vertical units		Easy solution to implement	Other Showersave products may offer a lower cost solution
Multivert	x	x	x	x	Cost effective solution for large scale buildings



Showersave is suitable for:

- Housing Developments
- Housing Associations
- Apartment Projects
- Bathroom Refurbishment
- Self Builders
- Commercial Projects

Showersavesystems are:

- Easy to install
- Low maintenance
- Highly reliable
- Beneficial to long term performance of buildings

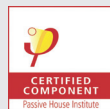
Showersave is a well-established and wonderfully simple system with low embedded carbon.

It is installed in over 130,000 homes across the UK and Europe, all of which are benefiting from the recovery of the heat energy contained in the waste water being thrown down the drain.

As well as being extremely easy to install, most Showersave systems are maintenance free and have an established record of high reliability.

Showersave is recognised by the BRE in both SAP & SBEM, it has become one of the most simple, sustainable and cost effective means of achieving Part L compliance.

For commercial developers Showersave can act as an inexpensive and invaluable insurance policy against unforeseen non-compliance of Part L requirements.



Building Products Distributors Ltd
Unit 21 Avondale Business Park, Ballyclare,
Co Antrim, BT39 9AU

T +44(0)28 9334 4488
E sales@showersave.com
www.showersave.com

Wonderfully **Reliable**