

Specification defines the quality, effectiveness and compliance of any new build.

At Showersave we aim to assist in that process because our goal has always been to simplify the challenges faced by all specifiers.

Our innovative and wonderfully simple waste water heat recovery system, will significantly impact on all elements of your building project, including the quality of the build, the delivery of cost effective living and overall regulatory compliance.

FIG 1

### System A Schematic Specification

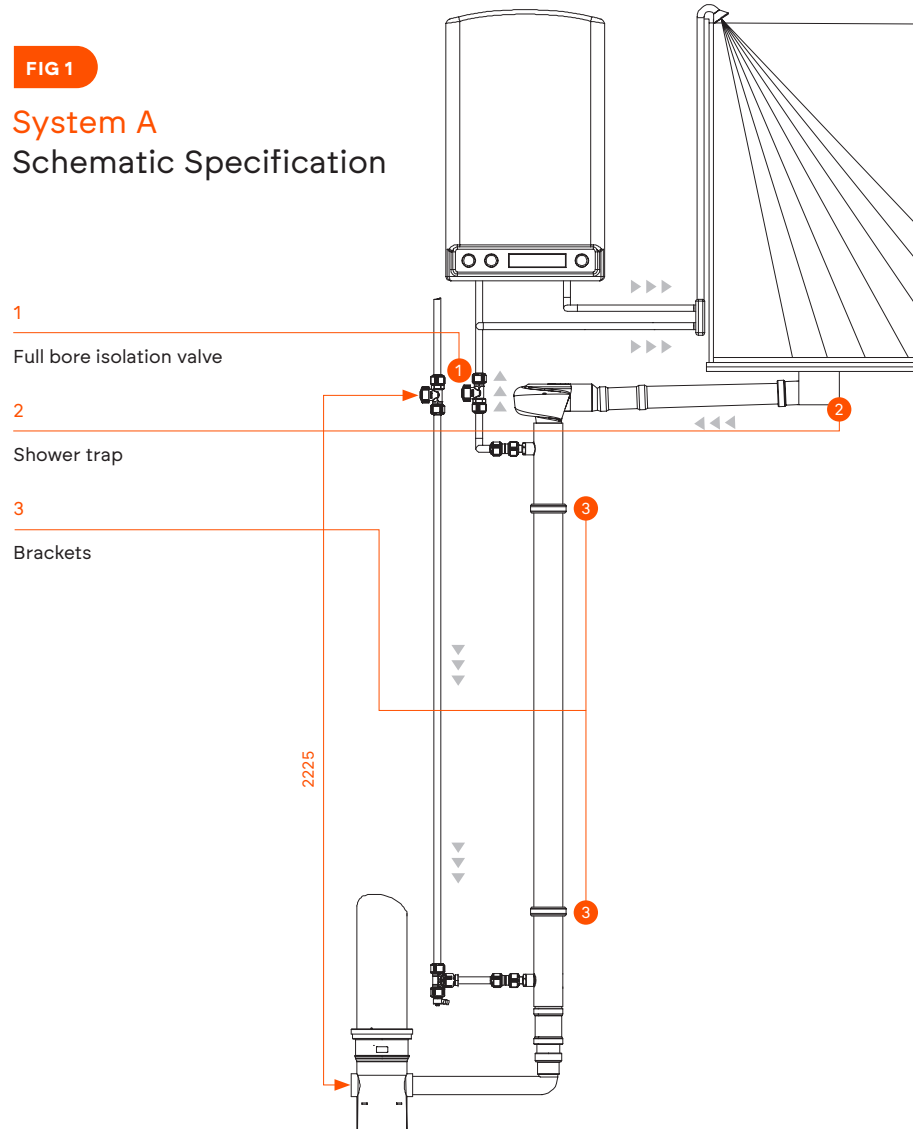
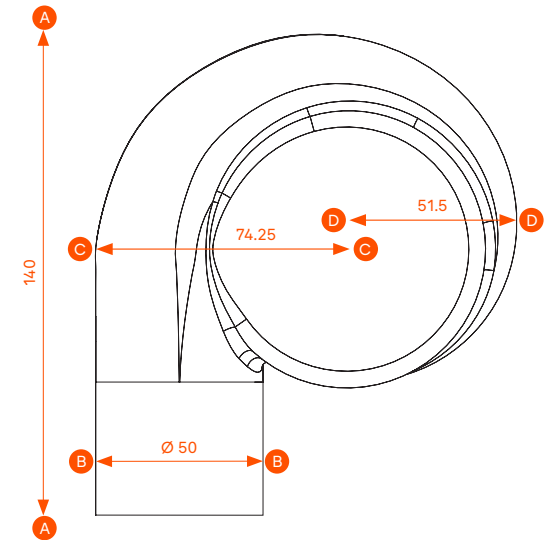


FIG 2

### Cyclone Specification

- AA 140mm
- BB Ø 50mm
- CC 74.25mm
- DD 74.25mm



CLASS	FLOW [L/MIN]	VOLUME [L]	EFFICIENCY [%]	FLOW RESISTANCE [ΔP] [BAR]
2	5.8	47	70.5	0.14
3	9.2	73	66.3	0.31
4,5,6	12.5	100	62.8	0.53

Product efficiency as certified by KIWA

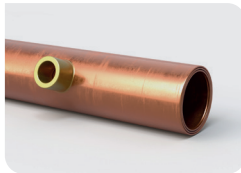
**CONTACT**

**Q-Blue B.V.**  
 Willem Barentszstraat 5  
 7825 VZ Emmen

0031 591 374570  
 info@q-blue.nl

QB1—21XE Specification

Products Components



QB1—21XE



EU Cyclone II



Dämmgulast pipe clamps



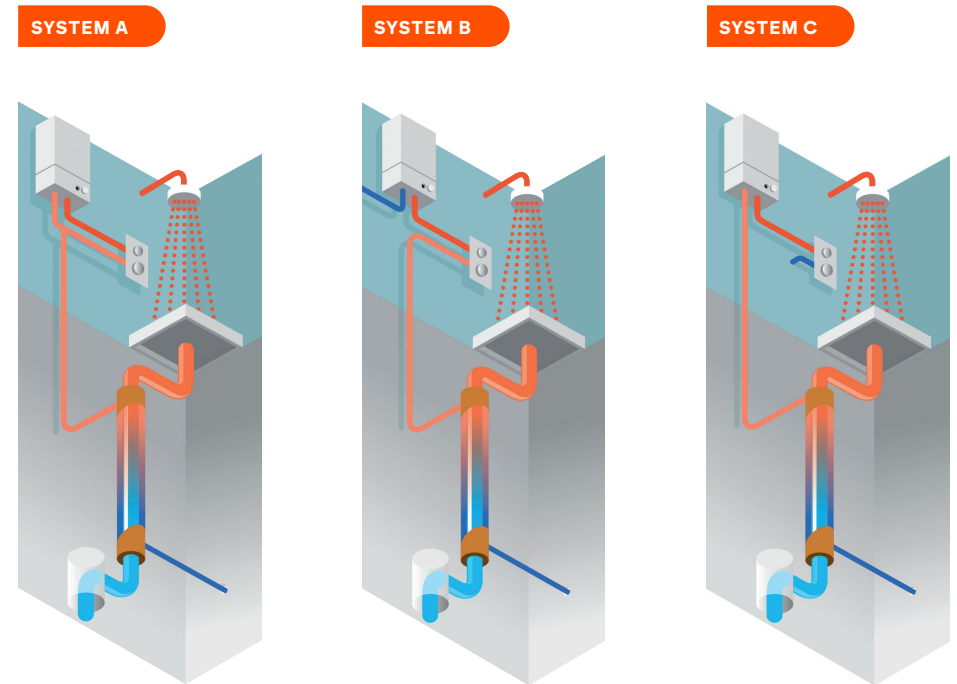
Sliding sleeve

PART NUMBER	DESCRIPTION
QB1—21XE	Showersave, 50mm Heat Exchanger, Copper
EU Cyclone II	Showersave, 50mm Cyclone
—	Dämmgulast Pipe Clamps
—	Sliding Sleeve Ø 50mm



Installation Methods

The inlet side of the QB1—21XE is connected to the mains water system. The outlet side can be installed in three different ways.



Pre warmed water feeds the cold inlet of both the shower and hot water heater.

Pre warmed water feeds the cold inlet of the shower only.

Pre warmed water feeds the cold inlet of the water heater only.

The largest energy and CO<sub>2</sub> saving is achieved by using System A.