

# Blue QB1—21XE



## Installation & Product Registration Guide

Wonderfully **Simple**

# 5 Year Warranty

The Showersave Blue QB1—21XE comes with a 5 year warranty. The warranty is conditional on the system being installed in accordance with this manual and registered.

It must also meet all the requirements of this manual if the system is to be recognised within SAP Assessments and therefore Part L of the Building Regulations [Part F Northern Ireland].

## Important

Failure to install the Showersave Blue QB1—21XE as specified may adversely affect the performance of the shower and impact on the Energy Performance Certificate at the end of construction.

Failure to correctly register this installation with the Showersave App may invalidate product warranty.

---



**Scan to view**  
Showersave unboxing  
& installation videos.

# Blue QB1—21XE


## Waste Water Heat Recovery [WWHR]

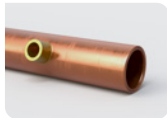
The Showersave Blue QB1—21XE included in the design SAP calculation is the highest performing WWHR unit in its category.

Substitution with a 'generic' alternative from another manufacturer will impact on the Energy Performance Certificate at the end of construction.



## Each Showersave Blue QB1—21XE is labelled as follows

NCM [SAP] Identifier	Showersave Blue QB1—21XE		Building Products Distributors Ltd Unit 21 Avondale Business Park, Ballyclare, Co. Antrim, BT39 9AU
Technology type	Waste Water Heat Recovery System [WWHRS]		
Technology category	Instantaneous Shower Heat Recovery		
Manufacturer	BPD Ltd	Brand Name	Showersave
Serial no.	2-21BD00002		
Model name	Showersave Blue QB1—21XE		
Model qualifier	System A / System B / System C		[delete as appropriate]
<p>This dwelling is fitted with a Waste Water Heat Recovery System [WWHRS] which is recognised by the Governments Standard Assessment Procedure [SAP] for Energy Rating of Dwellings. Note: One label should be permanently affixed to the WWHRS unit and another to a nearby Boiler or Service cupboard.</p>			



QB1—21XE



Cyclone



Power Pack



Sensor



Diaphragm Pump

PART NUMBER	DESCRIPTION
QB1—21XE	Showersave, 50mm Heat Exchanger, Copper
Cyclone	Showersave, 50mm Cyclone
Back Plate	200mm (w) 463mm (h) 150mm (d with the pump & transformer)
Power Pack	12v Low voltage transformer
Diaphragm Pump	12v Self Priming Diaphragm Pump, will run when dry
Sensor	No moving parts
Components	Z28L-ISO 1x McAlpine, 2"/50mm bottom connector, PP/PVCU 33435061 2x Walraven, pip clamps, 2S clamp zinc plated EPDM M8/10 53-61 6263808 2x Walraven, hanger bolts, zinc plated TorxM8*80mm

## There are three installation methods shown, each having an effect on the WWHRS performance and efficiency.

There are three installation methods. The Showersave Blue QB1—21XE is designed for installation in apartments and single storey dwellings where the vertical gravity fed systems are not appropriate for installation in the floor below the shower.

---

The Showersave should be installed by a suitably qualified plumber, and installed in the method as specified in SAP.

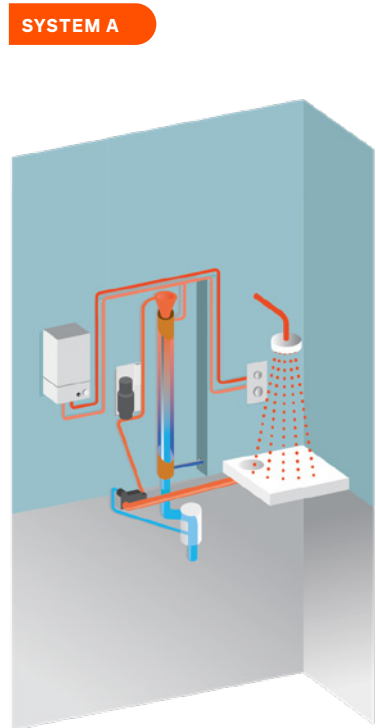
---

The performance of all 3 systems are recognised within the SAP Products Characteristics Database [PCDB] where the relevant efficiencies can be found [ncm-pcdb.org.uk/sap](http://ncm-pcdb.org.uk/sap)

---

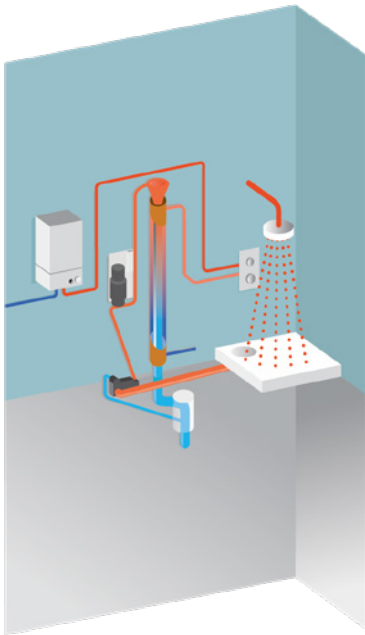
### PLEASE NOTE

All schematics are drawn showing a Combi Boiler as the hot water source. The same installation principle also applies if the hot water is supplied using a System Boiler, Unvented Cylinder, Heat Pump or Electric Boiler.

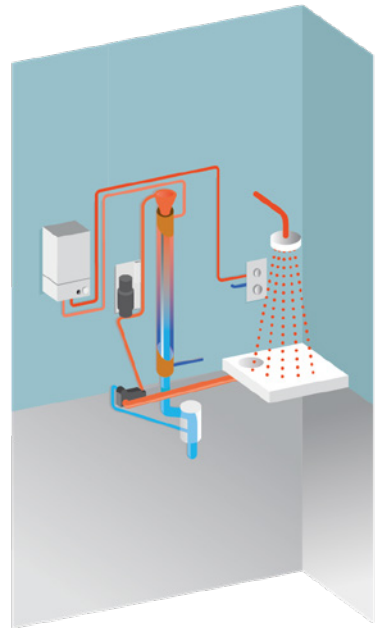


Pre-warmed water feeds the cold inlet of both the shower and hot water heater.

The largest energy and CO<sub>2</sub> saving is achieved by using System A

**SYSTEM B**

Pre-warmed water feeds the cold inlet of the shower only.

**SYSTEM C**

Pre-warmed water feeds the cold inlet of the water heater only.

# Blue QB1—21XE Installation Guide

1

Mount the pump back plate and pipe against the wall. Ensure the frame is mounted completely vertical and level. **WE RECOMMEND INSTALLING SOUND INSULATION AROUND THE PUMP.**

2

The mains water supply is connected to the bottom of the Blue QB1-21XE and the pre-warmed to the top using ½" BSP male 15/22mm fitting and connect in system A,B or C.

**ENSURE THE MAXIMUM TIGHTENING TORQUE FOR CONNECTORS IS 50NM.**



3

Connect the waste trap to the sensor using the supplied McAlpine T29-LN fitting. Ensure the overflow is lower than the shower waste trap.



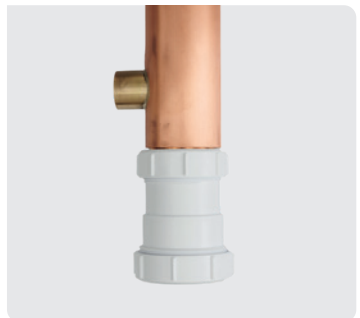
4

Connecting the overflow. Install supplied grey MF solvent weld elbow to the back of the sensor then connect supplied McAlpine S28M to the female end of the elbow, connect to SVP.



5

Install McAlpine Z28L-ISO, and connect to the Soil and Vent Pipe.



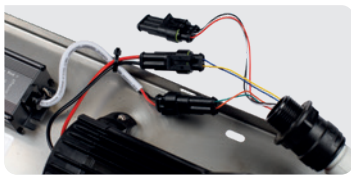
## 6

Connect the hoses between the sensor and pump, then pump to cyclone. Use the rubber washers supplied.



## 7

Connect the 4 wiring harness clips together. There is a 5th clip that is not required for this installation.



## 8

You must clearly label the pre-warmed outlet from the Blue QB1—21XE. The WWHR installation must be registered via the Showersave App.

### CALIBRATING AND COMMISSIONING

Follow these simple steps to calibrate the Blue Waste Water Heat Recovery System.

Calibration must be carried out. Failure to calibrate will invalidate the warranty.

1 Turn off the power.



2 Turn on the shower.



3 Fill the reservoir until the drain is full.



4 Turn off the shower.

5 Turn the power back on.

6 You can hear the pump is calibrating for about 15 –20 seconds.

7 Finally once the pump has stopped calibrating your Blue shower is ready for normal operation.



**Scan to view  
Calibration video**

### IMPORTANT

Mark the 2nd SAP Identifier label supplied as required and apply to the boiler cabinet so it is easily visible to an energy assessor, should the homeowner commission a Home Buyers EPC report. Failure to do this will invalidate the installation.

FIG 1

## System A Schematic Specification

**A**  
2100mm

**B**  
463mm

**C**  
200mm

### LEGIONELLA RISK AND MITIGATION

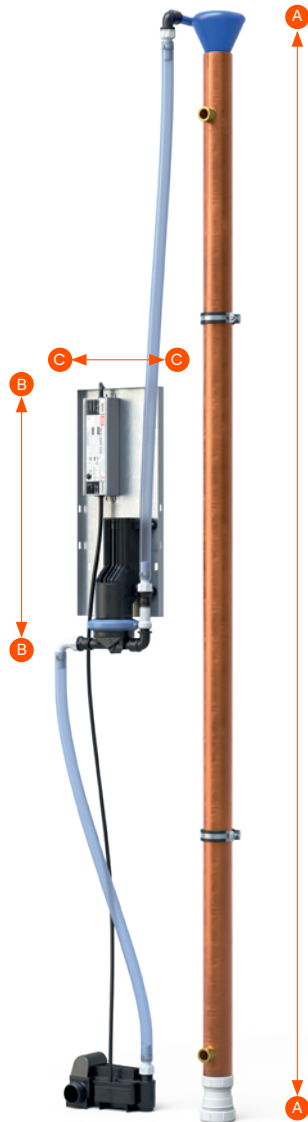
When no cold water is flowing up the Showersave, the temperature in the pipe should be prevented from becoming higher than 25°C.

It must not be installed near heat conducting pipes, on warm surfaces or in spaces with constantly high temperatures [ $>25^{\circ}\text{C}$ ].

The cold water pipe, connection and the outer wall of the Showersave should not be insulated.

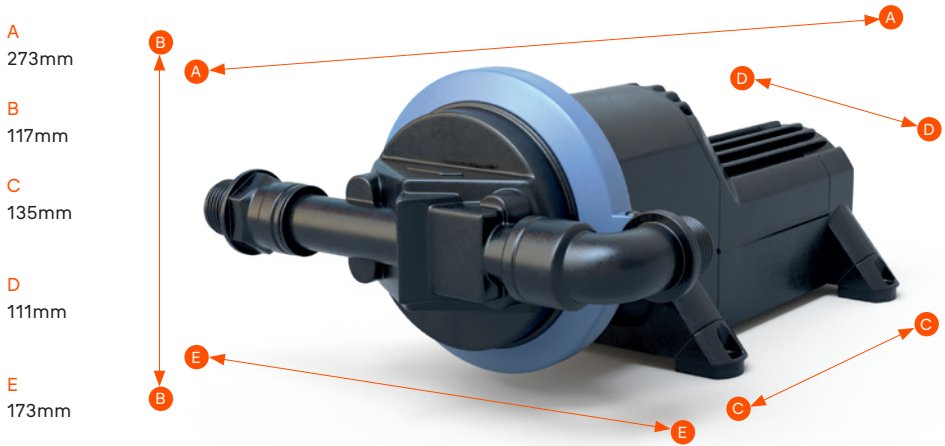
Installing the Showersave in system A or C will mean that whenever the hot water system runs the cold water system will be flushed. This will minimise stagnation and complies with recommendations within ACOP L8.

Where it is not possible to ensure a Tee at the cold side of the shower's thermostatic mixing valve, then a 'venturi' effect assembly should be considered. This is a straightforward assembly of different pipe diameters to ensure stagnation on the cold side is minimised.



**FIG 2**

## Diaphragm Pump Specification



CLASS	FLOW [l/MIN]	VOLUME [l]	EFFICIENCY [%]	FLOW RESISTANCE [ΔP] [BAR]
3	9.2	73	64.6	0.37
4,5,6	12.5	100	61.4	0.63
–	11	88	62.6	0.51

\*Numbers are based on the heat exchangers without pump/sensor unit  
Product efficiency as certified by KIWA

### POSITIONING OF THE SHOWERSAVE BLUE QB1—21XE

The Showersave Blue QB1—21XE should always be placed in an easily accessible location in order that inspection work can be undertaken. The warranty will become obsolete if this is not the case.

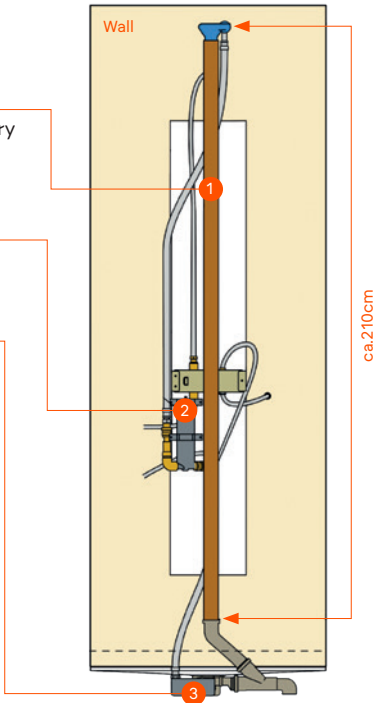
The WWHRs must always be installed within heated envelope of the building for SAP recognition.

### POSSIBLE LOCATIONS:

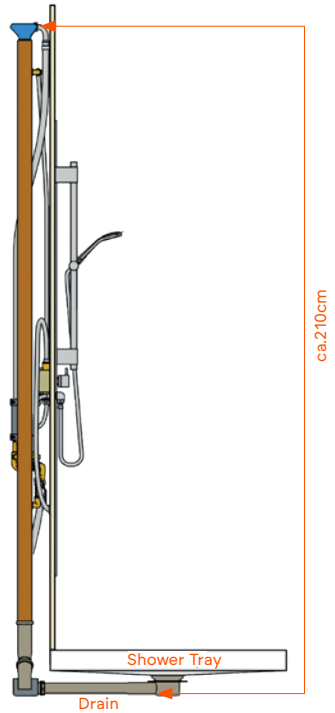
- In a void behind the shower/shower over bath depth 150mm ensure access at front or side.
- In a cupboard close to the shower waste where fall to the sensor unit will allow for 2.5cm: 1.0m (i.e. – 1 in 40)

Back view

- 1 Heat recovery module
- 2 Pump
- 3 Sensor



Side view



Always place Showersave as close to the shower outlet as possible.

Registering an installation using the Showersave App should take less than one minute.

If an installer is unable to access the App on-site, please contact us on +44 [0]28 9334 4488 or [sales@showersave.com](mailto:sales@showersave.com) to discuss alternative methods of registration.



 App Store



 Google Play

## INSTALL & OPEN APP

Create user account by selecting [Register](#) and completing user details. Enter email address and select [Login](#).

Scan [QR Code](#) on the Showersave pipe.

## COMPLETE FIELDS AS REQUESTED

### Unit Model

Select relevant model from dropdown menu.

### Serial Number

Available from label affixed to Showersave unit.

### Date & Time

Automatically populated.

### Name of Development

Enter development name.

### Name of Developer

Select from dropdown menu, if not listed contact Showersave.

### Plot / House Number

Enter relevant house / Plot number. [Street name and postcode can also be entered, if known].

### Name of Main Installation Company

Enter name of Installation company.

### Latitude / Longitude

Select pointer icon, which will automatically populate latitude / longitude fields. Once this information is complete, select [Done](#).

## UPLOADING PHOTOS

Select [Take photographs](#) and follow on-screen guidance to ensure that correct photos are taken.

### PLEASE NOTE

One photograph should clearly show the label attached to Showersave unit, including serial number, Model name and Model Qualifier. Installer should indicate on the product label, if System A, B or C has been used.

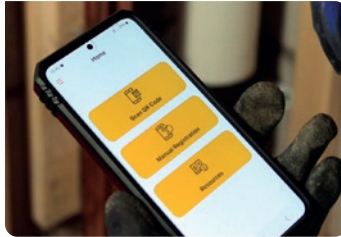
The second photograph must show the full length Showersave installation in situ.

Two photographs must be uploaded.

Select [Back to unit details](#).

Select [Register Unit](#) to Complete registration.

User will receive on-screen notification [Unit successfully registered](#).



Example 1



Example 2

---

## CONFIRMATION OF REGISTRATION

---

Select [Registered Installations](#) from the main menu. A list of all registered installations will be displayed.

It is now a legal requirement under new Building Regulations to register Showersave installations. This is not a request from Showersave, but an instruction from the regulation authorities.

Registration must be completed by the installer, prior to the unit being boxed in. It is not the responsibility of the homeowner to register post occupation.

Registering an installation is simple and will ensure product warranty is validated.





**CONTACT**

---

**Building Products Distributors Ltd**

Unit 21 Avondale Business Park  
Ballyclare, Co Antrim, BT39 9AU

+44 [0]28 9334 4488

[sales@showersave.com](mailto:sales@showersave.com)

[Technical@showersave.com](mailto:Technical@showersave.com)