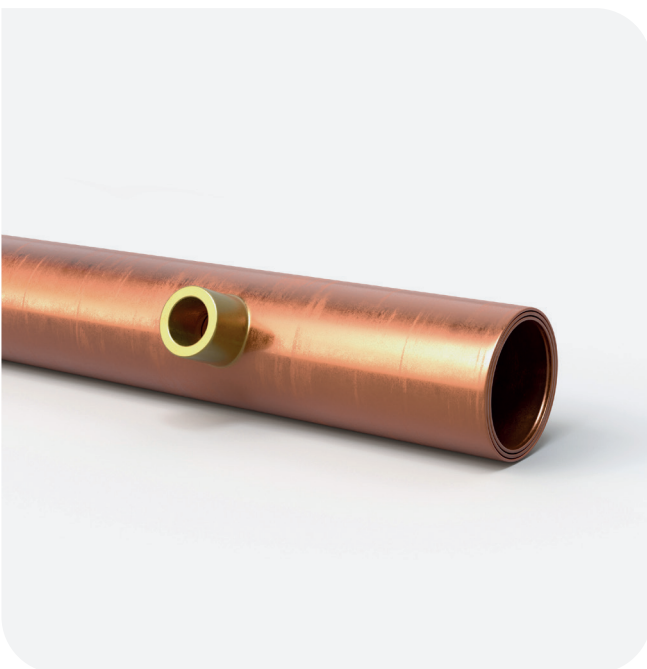




Waste water
heat recovery
The smart energy
saving solution



Product Guide
2025/26

Waste water heat recovery

The smart energy saving solution

A wonderfully simple route to cost effective energy saving

BENEFITS

- Critical for Part L 2021 compliance and route to Future Homes Standard
- Low CAPEX and competitive £ per point in SAP
- Showersave is >70% efficient, depending on flow rate
- 10-12% DPER reduction
- Alternative to MVHR, Solar PV and Triple Glazing
- Easy to fit and incorporate into building designs
- Can be kept in-line throughout whole house pressure test to >20 bar
- Proven to reduce running costs of heat pumps
- Requires little, or no maintenance
- Embedded Carbon independently measured at 51Kg Co₂e using CIBSE TM65 methodology. Carbon recovery less than 6 months
- The double walled pipe is fully reusable or recyclable
- Designed, manufactured and distributed by Showersave



Showersave is a well-established and wonderfully simple system with low embedded carbon.

Showersave are market leaders in WWHRS. Our wonderfully simple system with low embedded carbon is installed in over 200,000 homes globally. All of which are benefiting from the recovery of the heat energy contained in the waste water being thrown down the drain.

As well as being extremely easy to install, most Showersave systems are maintenance free and have an established record of high reliability.

Showersave is recognised by the BRE in both SAP & SBEM, it has become one of the most simple, sustainable and cost effective means of achieving Part L compliance.

For commercial developers Showersave can act as an inexpensive and invaluable insurance policy against unforeseen non-compliance of Part L requirements.



QB1—21XE

- Suitable for houses and apartments
- Connects up to 2 x showers
- Max efficiency of 70.6% @ 8l/min
- Most widely used and reliable system
- Double walled WWHRs
- Install on the floor below the shower
- Can be used in commercial projects seeking challenging BREEAM performance
- Certified Passivhaus
- Zero maintenance

NCM (SAP) Identifier: **80201**

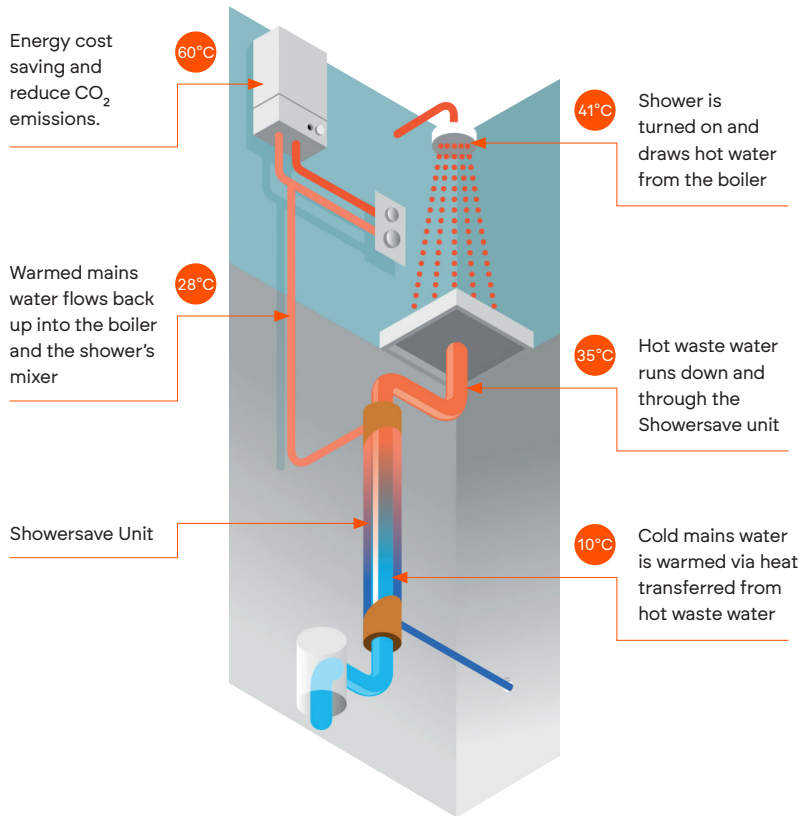


Blue QB1—21

- Suitable for apartments & bungalows
- Ideal retrofit solution
- Max efficiency of 69.85% @ 8l/min
- Best solution for new build apartment blocks
- Provides Housing Associations with an efficient means of reducing fuel poverty
- Double walled WWHRs
- Built-in overflow in case of power cut
- Very little maintenance required in comparison to Linear systems

NCM (SAP) Identifier: **80183**





Showersave is suitable for:

- Housing Developments
- Housing Associations
- Apartment Projects
- Bathroom Refurbishment
- Self Builders
- Commercial Projects

Showersave systems are:

- Easy to install
- Low maintenance
- Highly reliable
- Beneficial to long term performance of buildings

Multivert

- Ideal for commercial developments
- Connect multiple showers
- Efficiency generally, >40% dependent on peak use
- Cost effective plant room system, preheating water feed to calorifier
- Recognised status in SBEM
- Reduces need for designing in PV and CHP systems
- Double walled WWHRS
- Connects to grey water waste
- Extremely low maintenance
- Bespoke design for most projects where primary energy demand, as a result of domestic hot water, is high
- Use in apartments with district heating when space in risers is at a premium
- Unrivalled returns on investment for building occupiers





Learn more
showertime.com



	House	Apartment Private Sale	Apartment PRS/Social	Bungalow	Building with multiple showers (eg. Hotel, Hall of Residence, Leisure Centre)
QB1-21XE	Ideal solution for volume developer	May be installed in common service riser	Ideal solution if installed in service riser or domain of flat below	-	High efficiency solution for SBEM / BREEAM assessment
Showersave Blue QB1-21	-	Designed to overcome the maintenance problems of horizontal WWHR, while delivering the higher efficiency of vertical units		Easy solution to implement	Other Showersave products may offer a lower cost solution
Multivert	-	-	-	-	Cost effective solution for large scale buildings

CONTACT

Building Products Distributors Ltd
Unit 21 Avondale Business Park
Ballyclare, Co Antrim, BT39 9AU

+44 [0]28 9334 4488
sales@showertime.com
technical@showertime.com



Part of the Keystone Group

06/2025