



QB1—21XE

Installation
& Product
Registration
Guide

Wonderfully **Simple**

5 Year Warranty

The Showersave QB1—21XE comes with a 5 year warranty. The warranty is conditional on the system being installed in accordance with this manual and registered.

It must also meet all the requirements of this manual if the system is to be recognised within SAP Assessments and therefore Part L of the Building Regulations [Part F Northern Ireland].

Important

Failure to install the Showersave QB1—21XE as specified may adversely affect the performance of the shower and impact on the Energy Performance Certificate at the end of construction.

Failure to correctly register this installation with the Showersave App may invalidate product warranty.



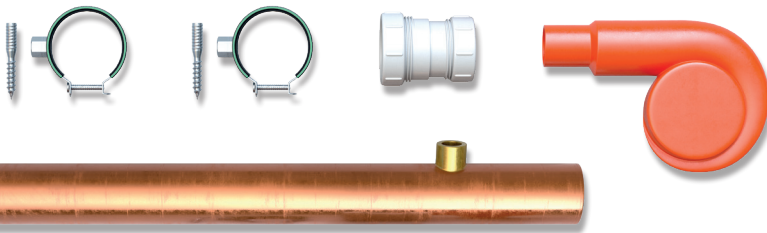
Scan to view
Showersave unboxing
& installation videos.

QB1—21XE


Waste Water Heat Recovery [WWHR]

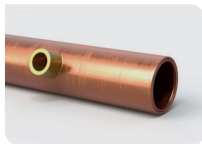
The Showersave QB1—21XE included in the design SAP calculation is the highest performing WWHR unit in its category.

Substitution with a 'generic' alternative from another manufacturer will impact on the Energy Performance Certificate at the end of construction.



Each Showersave QB1—21XE is labelled as follows

NCM [SAP] Identifier	Showersave QB1—21XE		Building Products Distributors Ltd Unit 21 Avondale Business Park, Ballyclare, Co. Antrim, BT39 9AU
Technology type	Waste Water Heat Recovery System [WWHRS]		
Technology category	Instantaneous Shower Heat Recovery		
Manufacturer	BPD Ltd	Brand Name	Showersave
Serial no.	2-21BD00002		
Model name	QB1—21XE		
Model qualifier	System A / System B / System C		[delete as appropriate]
<p>This dwelling is fitted with a Waste Water Heat Recovery System [WWHRS] which is recognised by the Governments Standard Assessment Procedure [SAP] for Energy Rating of Dwellings. Note: One label should be permanently affixed to the WWHRS unit and another to a nearby Boiler or Service cupboard.</p>			



QB1—21XE



Cyclone



Z28L—ISO



33435061 / 6263808

PART NUMBER	DESCRIPTION
QB1—21XE	Showersave, 50mm Heat Exchanger, Copper
Cyclone	Showersave, 50mm Cyclone
Z28L-ISO	McAlpine, 2"/50mm Bottom Connector, PP/PVCU
33435061	Walraven, Pipe Clamps, 2S Clamp zinc plated EPDM M8/10 53-61mm
6263808	Walraven, Hanger Bolts, zinc plated TorxM8*80mm

There are three installation methods, each having an effect on the WWHRS performance and efficiency.

The Showersave should be installed by a suitably qualified plumber, and installed in the method as specified in SAP.

The performance of all 3 systems are recognised within the SAP Products Characteristics Database [PCDB] where the relevant efficiencies can be found ncm-pcdb.org.uk/sap

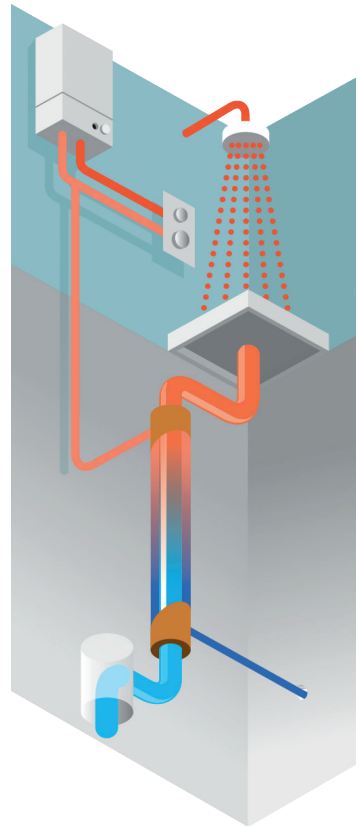
PLEASE NOTE

All schematics are drawn showing a Combi Boiler as the hot water source. The same installation principle also applies if the hot water is supplied using a System Boiler, Unvented Cylinder, Heat Pump or Electric Boiler.

The largest energy and CO₂ saving is achieved by using System A

SYSTEM A

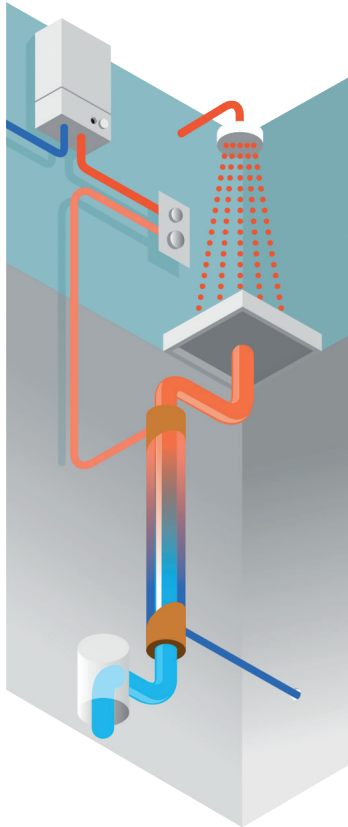
SAP Code 80201



Pre warmed water feeds the cold inlet of both the shower and hot water heater.

SYSTEM B

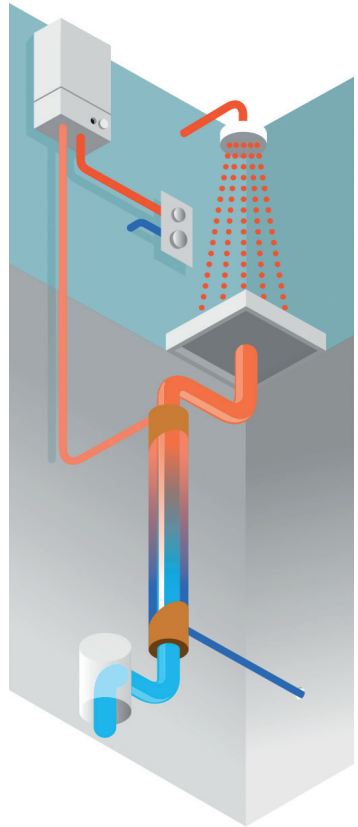
SAP Code 80203



Pre warmed water feeds
the cold inlet of the
shower only.

SYSTEM C

SAP Code 80205



Pre warmed water feeds
the cold inlet of the
water heater only.

QB1—21XE Installation Guide

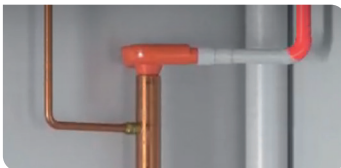
1

Install the Showersave QB1—21XE vertically. Install the Showersave QB1—21XE vertically, using the two brackets and hanger bolts supplied.



2

Connect the waste water to the Cyclone and the Cyclone to the top of the pipe. **USE CLEAN WATER SPARINGLY ON THE O-RINGS. INSERT SLOWLY WITH TWISTING ACTION.**



3

Using the straight through McAlpine Z28L-ISO compression connector supplied, connect the waste from the bottom of the Showersave QB1—21XE to the SVP.

4

The mains water supply is connected to the bottom of the QB1—21XE using ½" BSP male 15/22mm fitting.



5

Only use PTFE liquid/tape to seal the thread, max 50Nm torque. **DO NOT USE HEMP AND DO NOT OVER TIGHTEN.**

6

Install an isolator to both inlet and outlet mains water supply. These can be installed anywhere in the property.

7

Connect the ½" BSP male 15/22mm fitting to the outlet of the QB1—21XE and connect in system A,B or C.



8

You must clearly label the pre-warmed outlet from the WWHRS. Do not wrap the Showersave QB1—21XE with insulation.

PRESSURE TEST UP TO 20 BAR.



IMPORTANT

Mark the 2nd SAP Identifier label supplied as required and apply to the boiler cabinet so it is easily visible to an energy assessor, should the homeowner commission a Home Buyers EPC report. Failure to do this will invalidate the installation.

LEGIONELLA RISK AND MITIGATION

When no cold water is flowing up the Showersave, the temperature in the pipe should be prevented from becoming higher than 25°C.

It must not be installed near heat conducting pipes, on warm surfaces or in spaces with constantly high temperatures [$>25^{\circ}\text{C}$].

The cold water pipe, connection and the outer wall of the Showersave should not be insulated.

Installing the Showersave in system A or C will mean that whenever the hot water system runs the cold water system will be flushed. This will minimise stagnation and complies with recommendations within ACOP L8.

Where it is not possible to ensure a Tee at the cold side of the shower's thermostatic mixing valve, then a 'venturi' effect assembly should be considered. This is a straightforward assembly of different pipe diameters to ensure stagnation on the cold side is minimised.



The QB1—21XE installation must be registered via the Showersave App. Scan to view installation videos

FIG 1

System A Schematic Specification

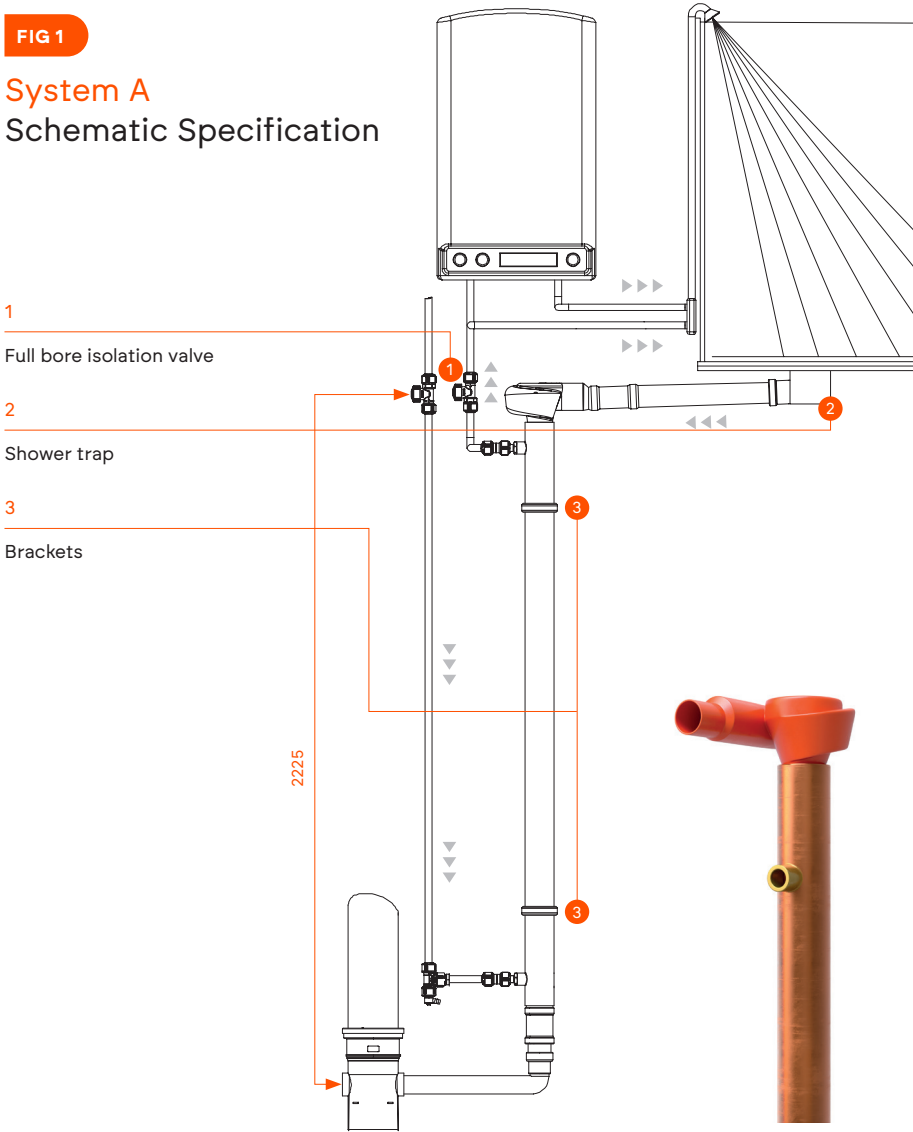


FIG 2

Cyclone Specification

AA
90mm

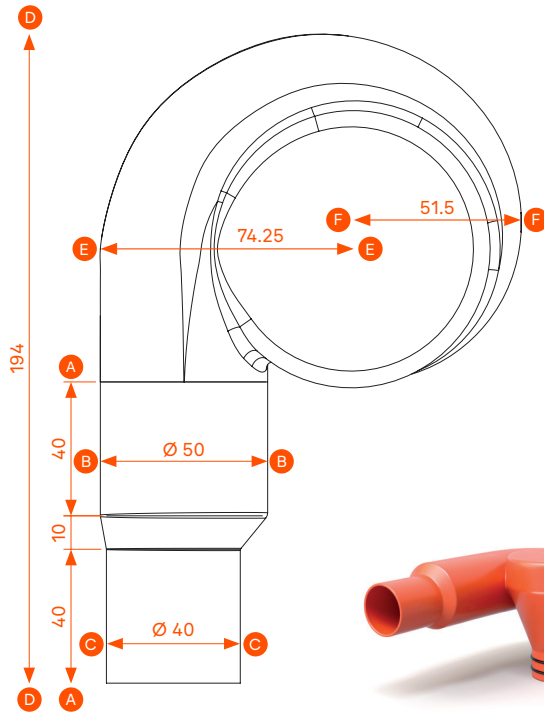
BB
Ø 50mm

CC
Ø 40mm

DD
194mm

EE
74.25mm

FF
51.5mm



CLASS	FLOW [l/MIN]	VOLUME [l]	EFFICIENCY [%]	FLOW RESISTANCE [ΔP] [BAR]
2	5.8	47	70.5	0.14
3	9.2	73	66.3	0.31
4,5,6	12.5	100	62.8	0.53

Product efficiency as certified by KIWA

Boxing Off Detail

1

The QB1—21XE Cyclone can be located in the ceiling void, if required.

2

The size of the boxed off unit will be no more than 2,400mm in height, 340mm in width and 240mm in depth.

3

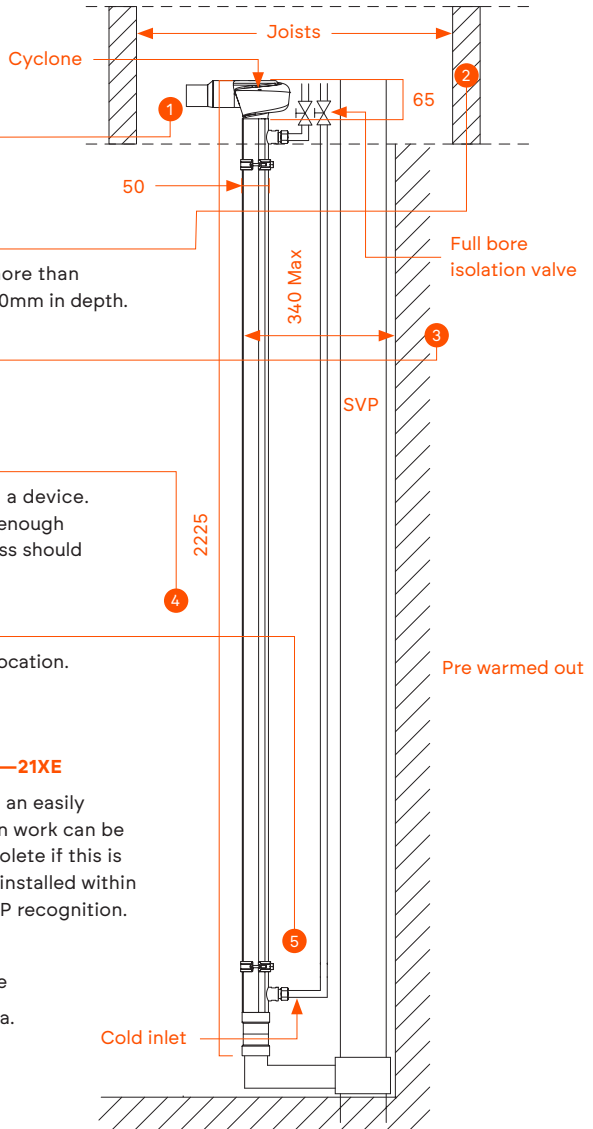
The boxing off needs to be in accordance with the NHBC standards AD part E.

4

The Showersave QB1—21XE is considered a device. The space it is installed in should be large enough so that inspection can be carried out. Access should be possible without too much work.

5

The cold inlet / outlet can come from any location.



POSITIONING OF THE SHOWERSAVE QB1—21XE

The QB1—21XE should always be placed in an easily accessible location in order that inspection work can be undertaken. The warranty will become obsolete if this is not the case. The WWHRs must always be installed within the heated envelope of the building for SAP recognition.

Possible locations:

- In a cupboard close to the shower waste
- Pre-defined and specified technical area.
- Do not install behind kitchen worktops.

Always place Showersave unit as close to the shower outlet as possible.

Registering an installation using the Showersave App should take less than one minute.

If an installer is unable to access the App on-site, please contact us on [+44 \[0\]28 9334 4488](tel:+44202893344488) or sales@showersave.com to discuss alternative methods of registration.



 App Store



 Google Play

INSTALL & OPEN APP

Create user account by selecting [Register](#) and completing user details. Enter email address and select [Login](#).

Scan [QR Code](#) on the Showersave pipe.

COMPLETE FIELDS AS REQUESTED

Unit Model

Select relevant model from dropdown menu.

Serial Number

Available from label affixed to Showersave unit.

Date & Time

Automatically populated.

Name of Development

Enter development name.

Name of Developer

Select from dropdown menu, if not listed contact Showersave.

Plot / House Number

Enter relevant house / Plot number. [Street name and postcode can also be entered, if known].

Name of Main Installation Company

Enter name of Installation company.

Latitude / Longitude

Select pointer icon, which will automatically populate latitude / longitude fields. Once this information is complete, select [Done](#).

UPLOADING PHOTOS

Select [Take photographs](#) and follow on-screen guidance to ensure that correct photos are taken.

PLEASE NOTE

One photograph should clearly show the label attached to Showersave unit, including serial number, Model name and Model Qualifier. Installer should indicate on the product label, if System A, B or C has been used.

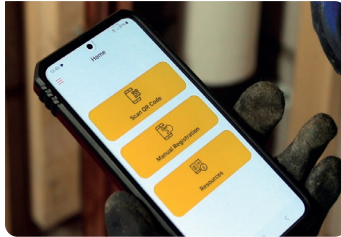
The second photograph must show the full length Showersave installation in situ.

Two photographs must be uploaded.

Select [Back to unit details](#).

Select [Register Unit](#) to Complete registration.

User will receive on-screen notification [Unit successfully registered](#).



Example 1



Example 2

CONFIRMATION OF REGISTRATION

Select [Registered Installations](#) from the main menu. A list of all registered installations will be displayed.

It is now a legal requirement under new Building Regulations to register Showersave installations. This is not a request from Showersave, but an instruction from the regulation authorities.

Registration must be completed by the installer, prior to the unit being boxed in. It is not the responsibility of the homeowner to register post occupation.

Registering an installation is simple and will ensure product warranty is validated.





CONTACT

Building Products Distributors Ltd

Unit 21 Avondale Business Park
Ballyclare, Co Antrim, BT39 9AU

+44 [0]28 9334 4488

sales@showersave.com

Technical@showersave.com