

Specification defines the quality, effectiveness and compliance of any new build.

At Showersave we aim to assist in that process because our goal has always been to simplify the challenges faced by all specifiers.

Our innovative and wonderfully simple waste water heat recovery system, will significantly impact on all elements of your building project, including the quality of the build, the delivery of cost effective living and overall regulatory compliance.

Blue QB1—21XE Specification

FIG 1

System A Schematic Specification

- A 2100mm
- B 463mm
- C 200mm

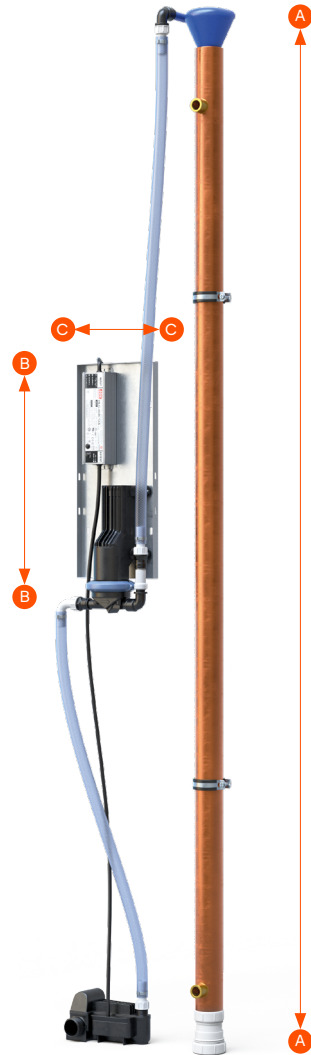
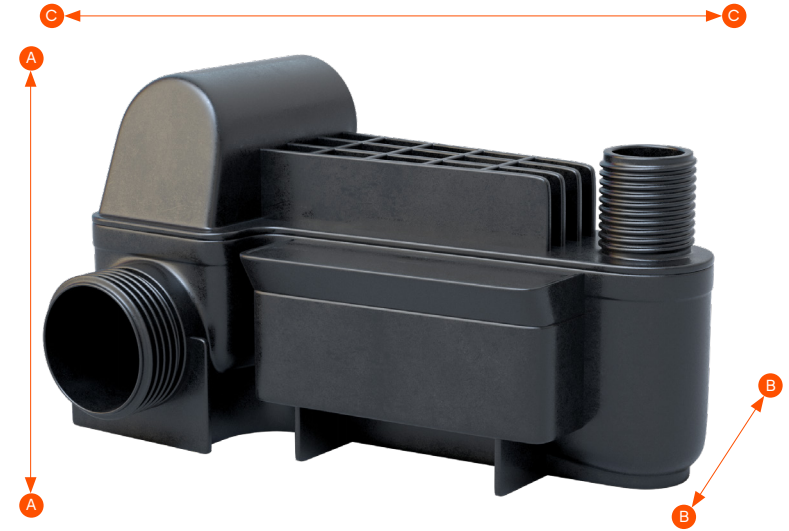


FIG 2

Sensor Specification

- A Height 100mm
- B Depth 95mm
- C Width 170mm



CLASS	FLOW [L/MIN]	VOLUME [L]	EFFICIENCY [%]	FLOW RESISTANCE [ΔP] [BAR]
3	9.2	73	64.6	0.37
4,5,6	12.5	100	61.4	0.63
-	11	88	62.6	0.51

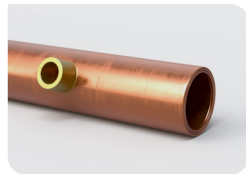
*Numbers are based on the heat exchangers without pump/sensor unit
Product efficiency as certified by KIWA

CONTACT

Building Products Distributors Ltd
 Unit 21 Avondale Business Park
 Ballyclare, Co Antrim, BT39 9AU

+44 [0]28 9334 4488
sales@showersave.com
Technical@showersave.com

Products Components



QB1—21XE



Cyclone



Power Pack



Sensor



Diaphragm Pump

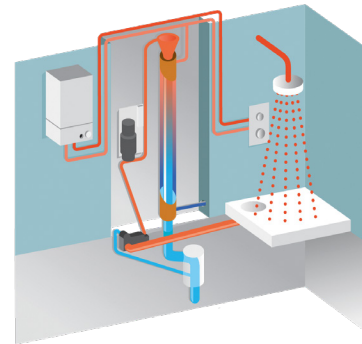
PART NUMBER	DESCRIPTION
QB1—21XE	Showersave, 50mm Heat Exchanger, Copper
Cyclone	Showersave, 50mm Cyclone
Back Plate	200mm (w) 463mm (h) 150mm (d with the pump & transformer)
Power Pack	12v Low voltage transformer
Diaphragm Pump	12v Self Priming Diaphragm Pump, will run when dry
Sensor	No moving parts
Components	Z28L-ISO 1x McAlpine, 2"/50mm bottom connector, PP/PVCU 33435061 2x Walraven, pip clamps, 2S clamp zinc plated EPDM M8/10 53-61 6263808 2x Walraven, hanger bolts, zinc plated TorxM8*80mm



Installation Methods

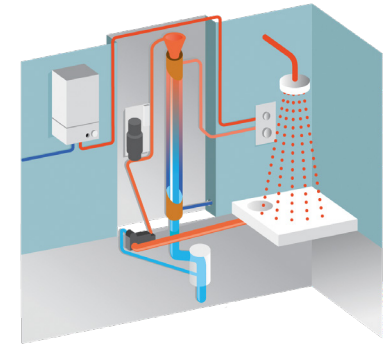
The inlet side of the Blue QB1—21XE is connected to the mains water system. The outlet side can be installed in three different ways, that are recognised in SAP, namely:

SYSTEM A



Pre-warmed water feeds the cold inlet of both the shower and hot water heater.

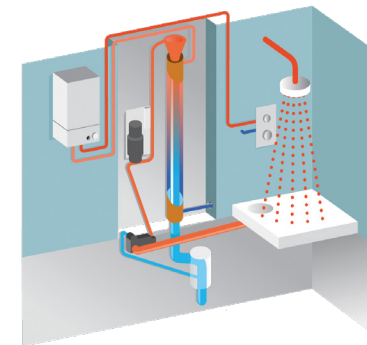
SYSTEM B



Pre-warmed water feeds the cold inlet of the shower only.

SYSTEM C

Pre-warmed water feeds the cold inlet of the water heater only.



Showersave Blue QB1—21XE is designed for installation in apartments and single storey dwellings where the vertical gravity fed systems are not appropriate for installation in the floor below the shower.

The largest energy and CO₂ saving is achieved by using System A.